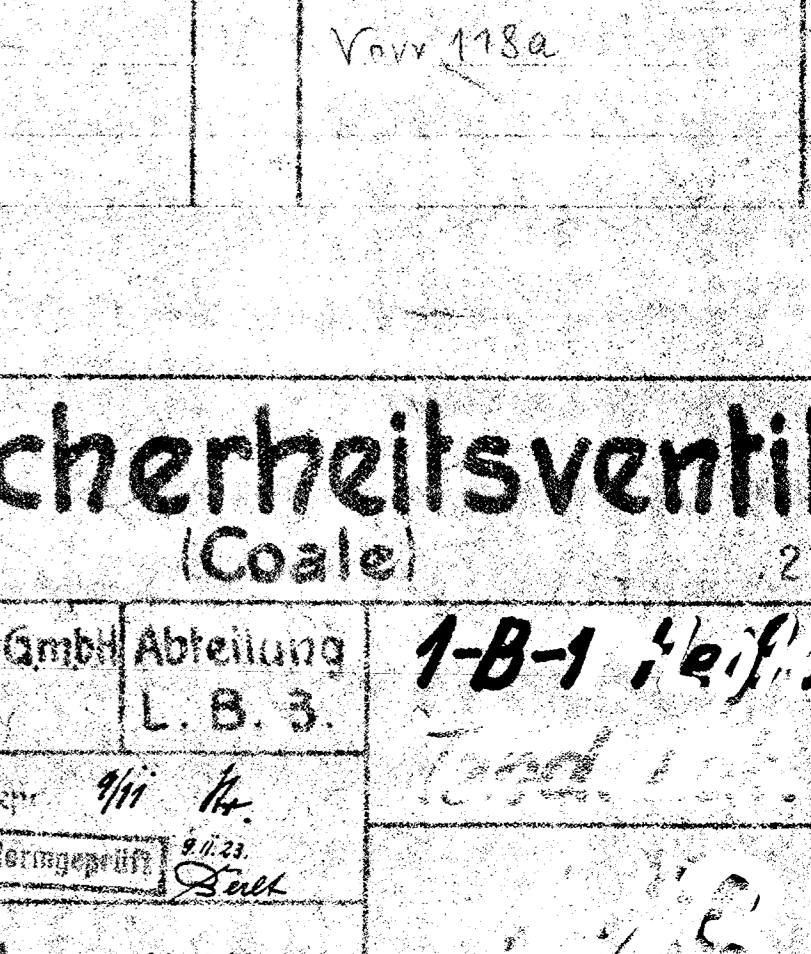
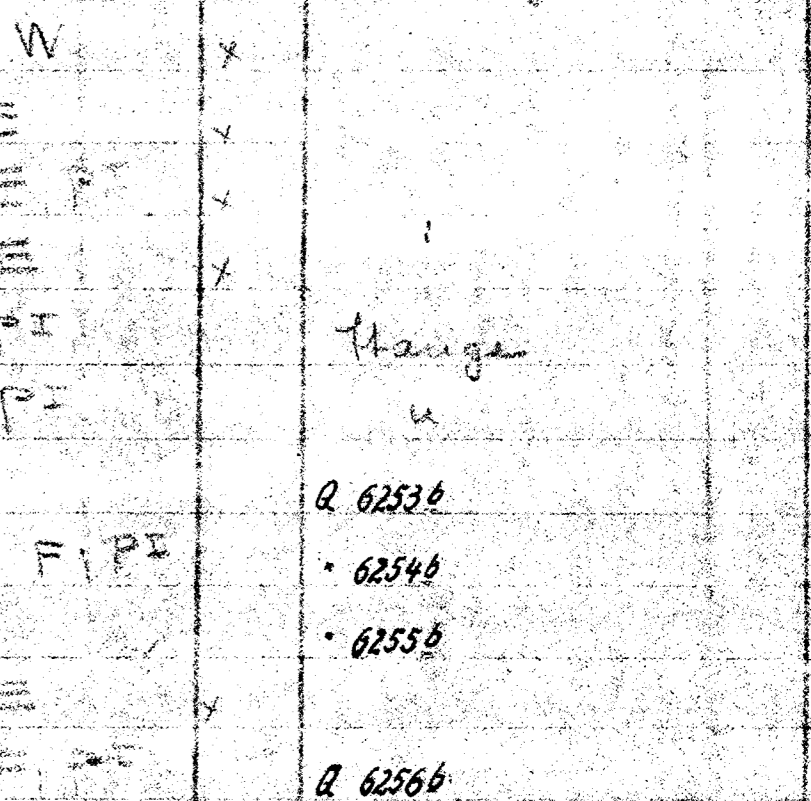
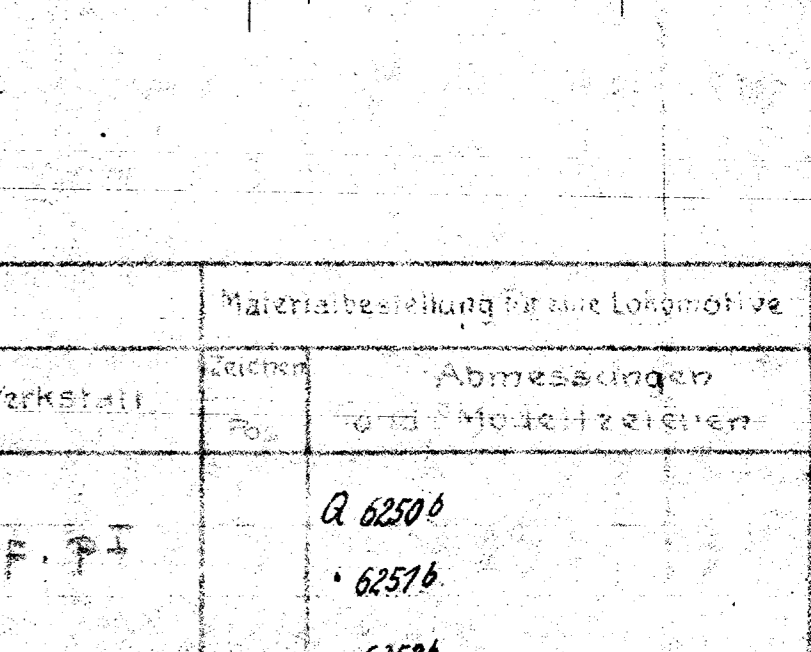
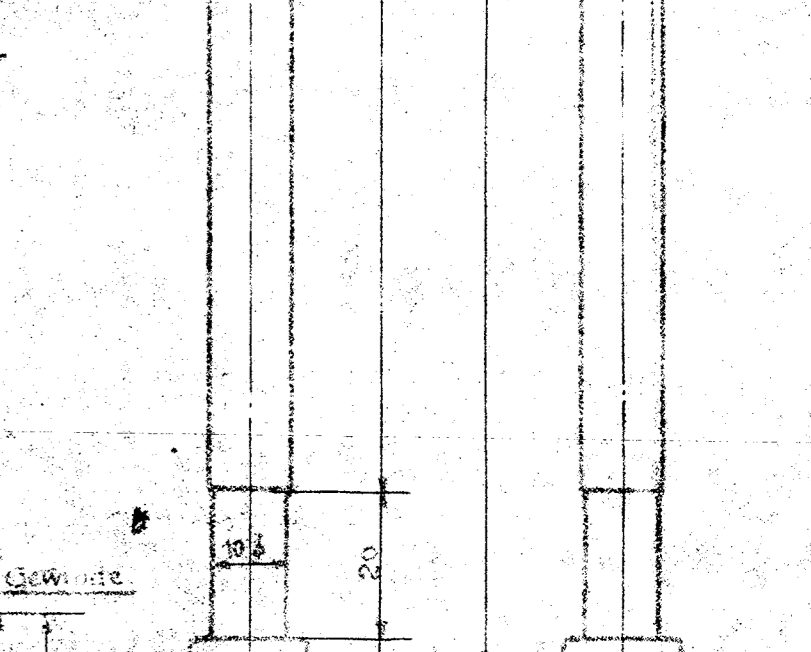
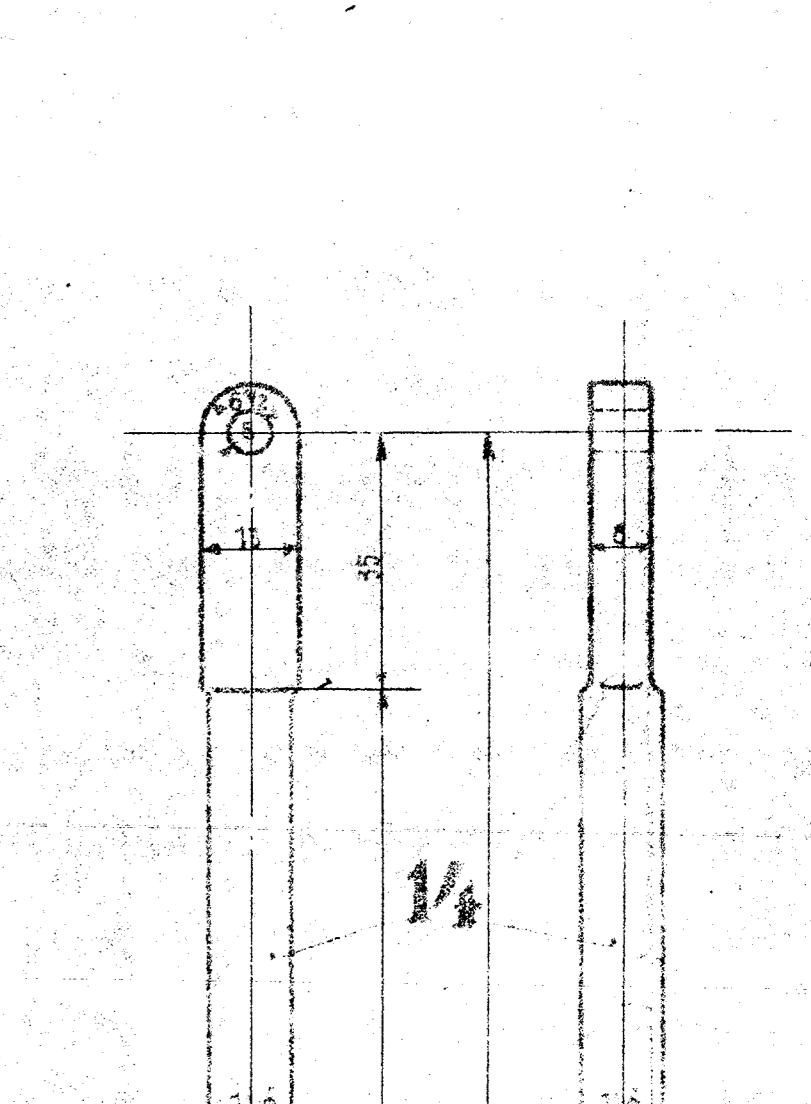
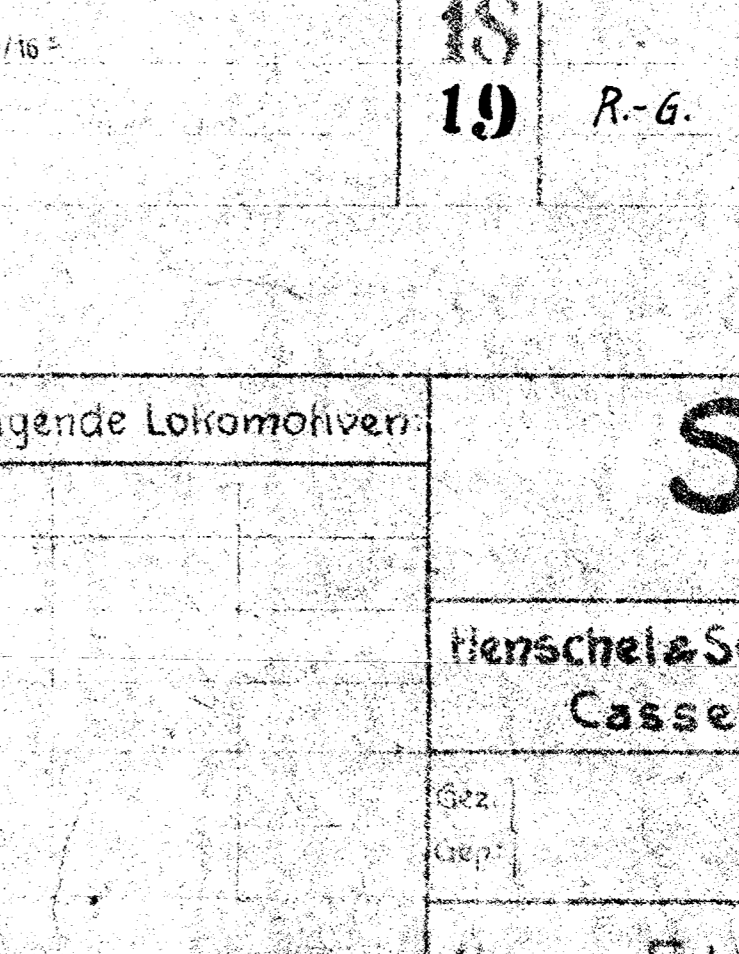
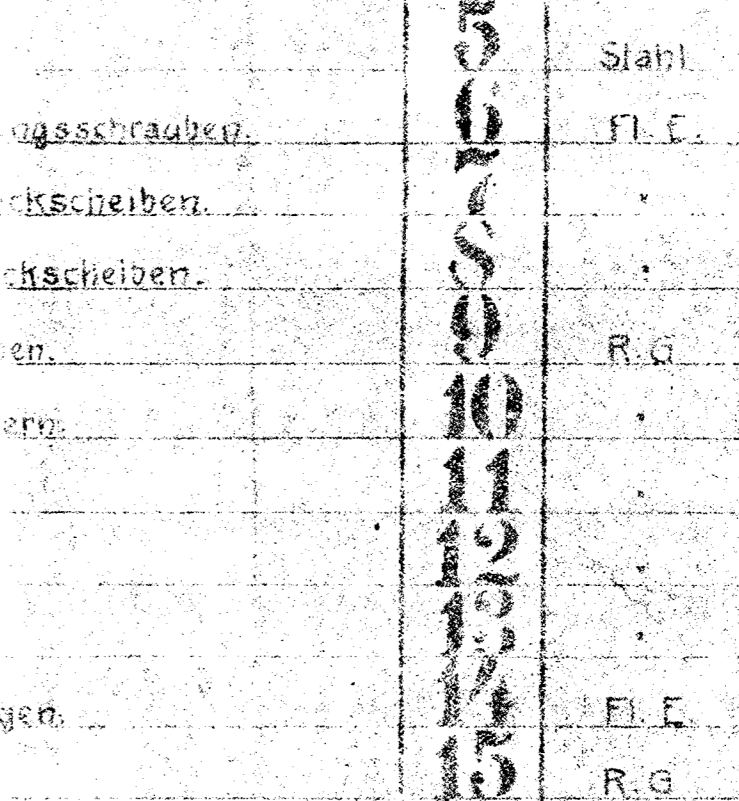
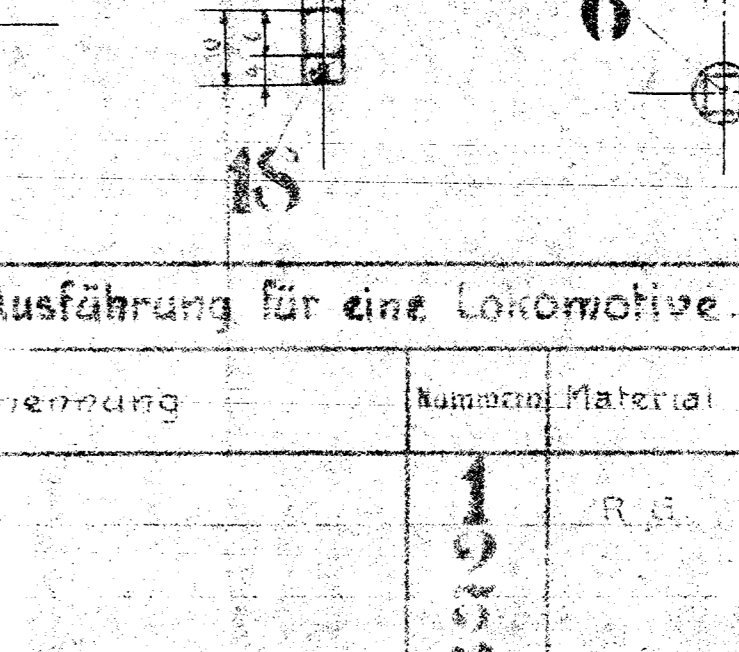
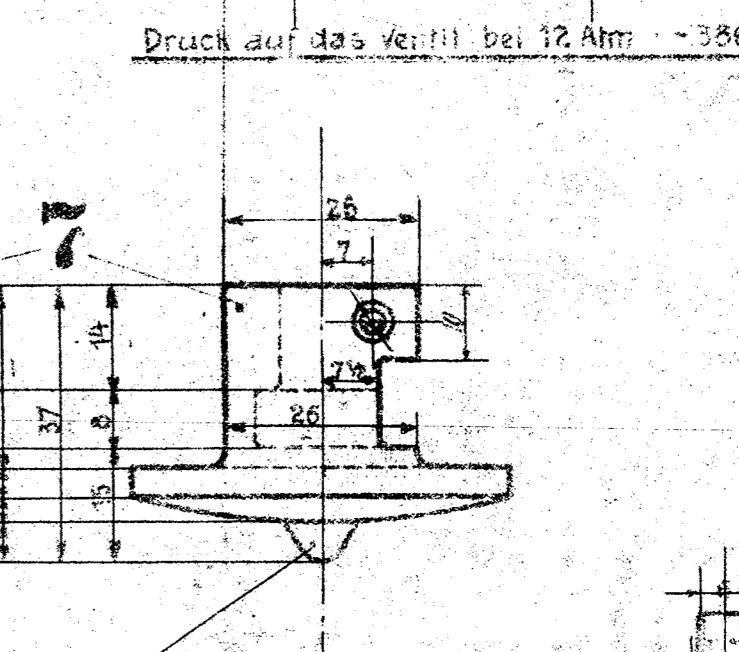
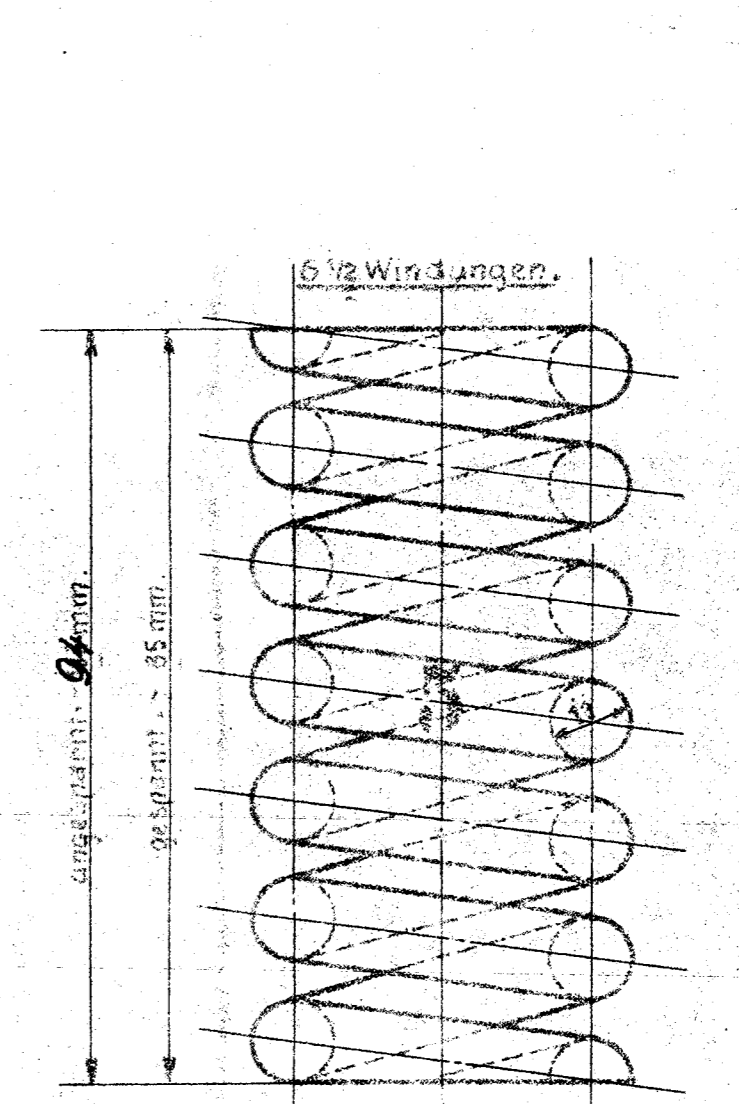
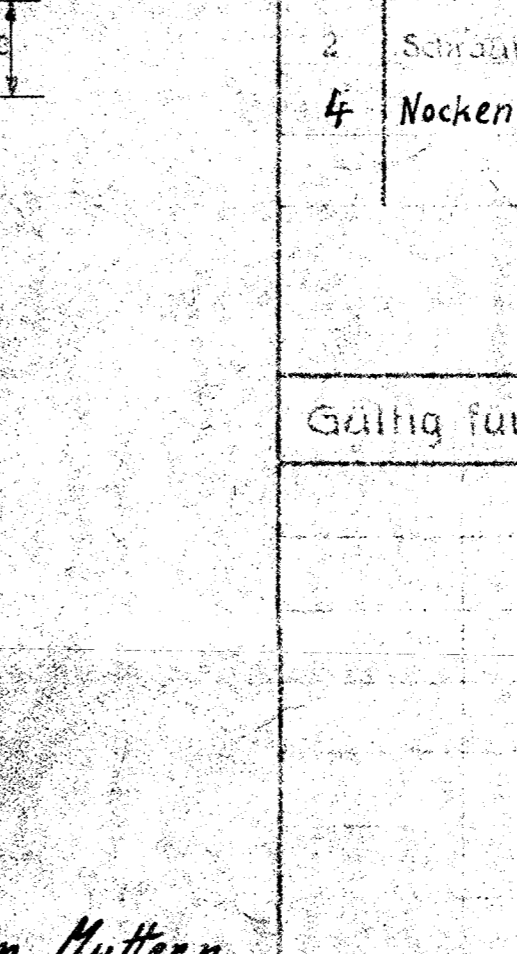
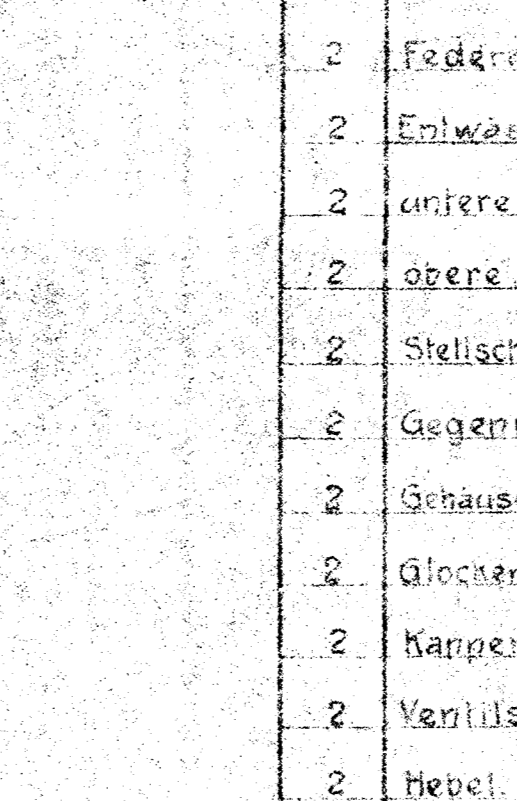
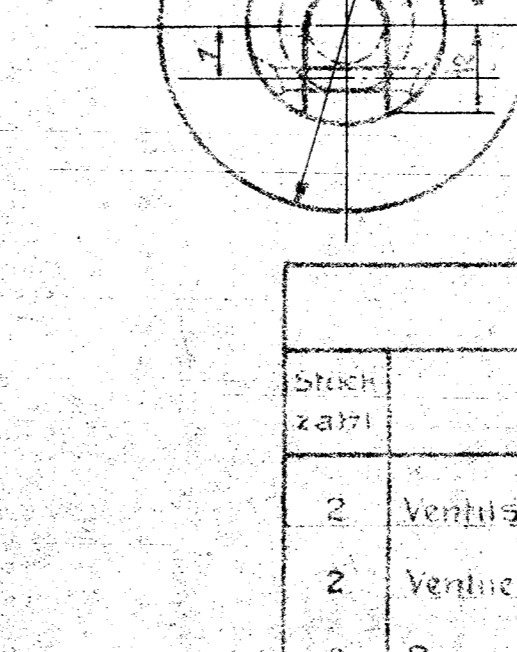
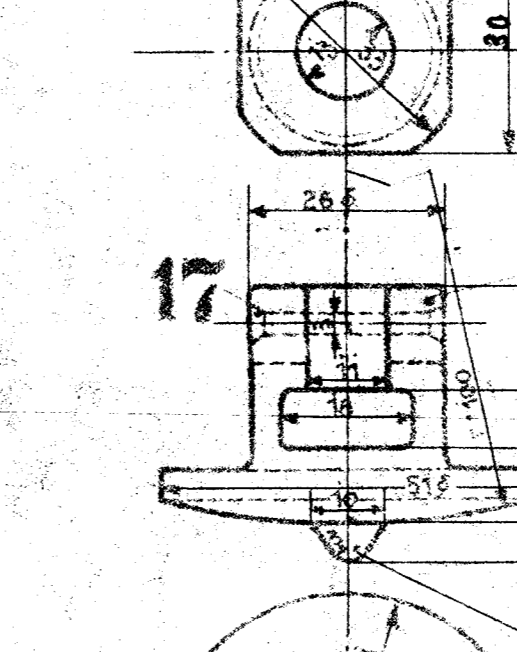
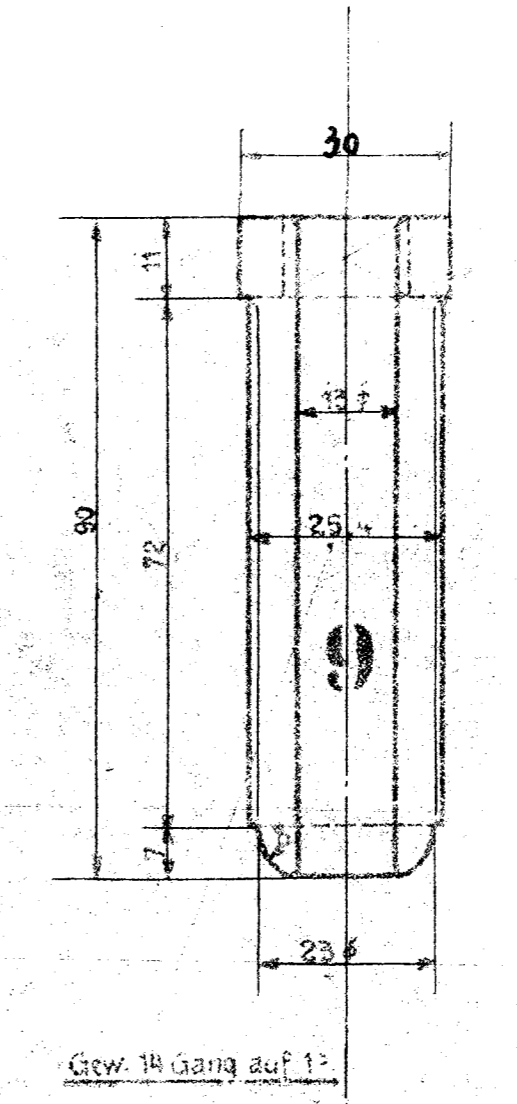
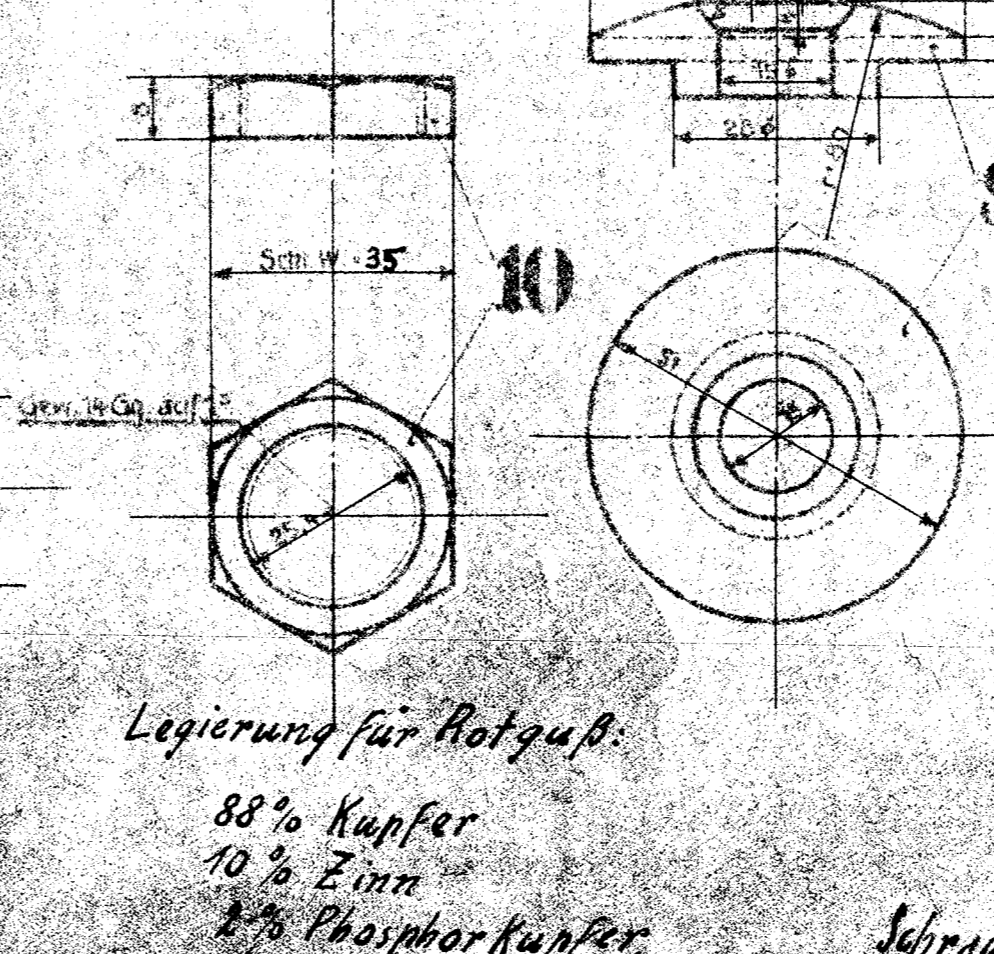
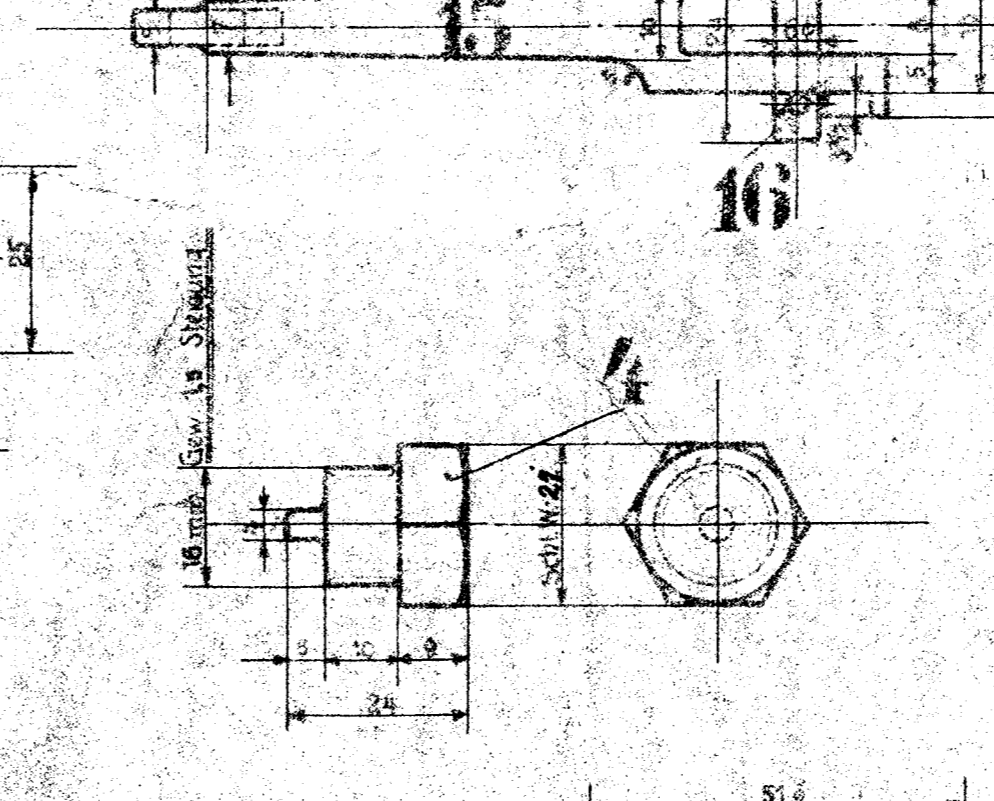
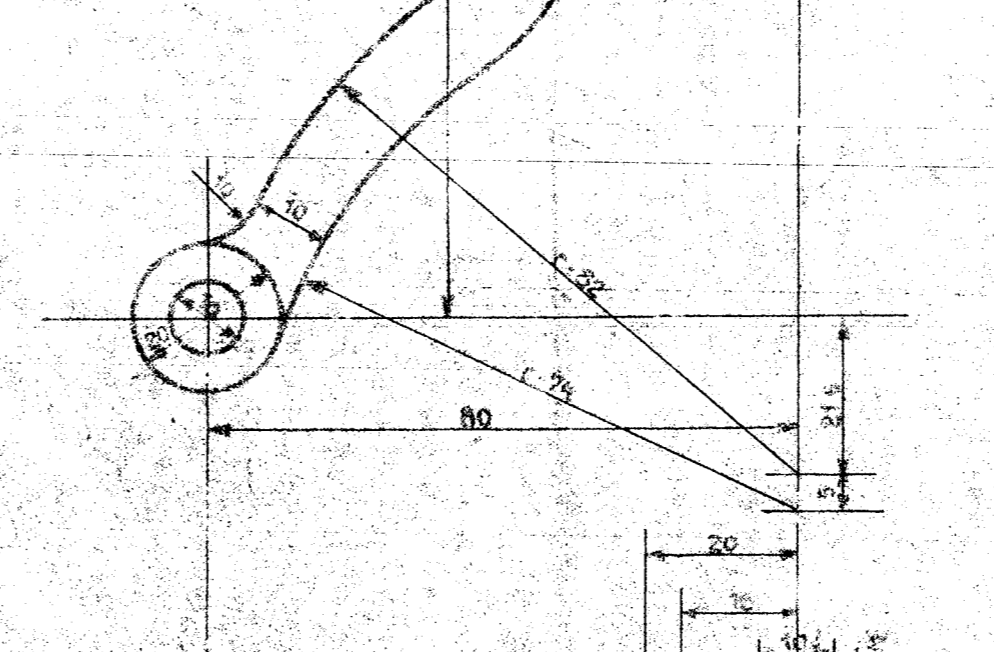
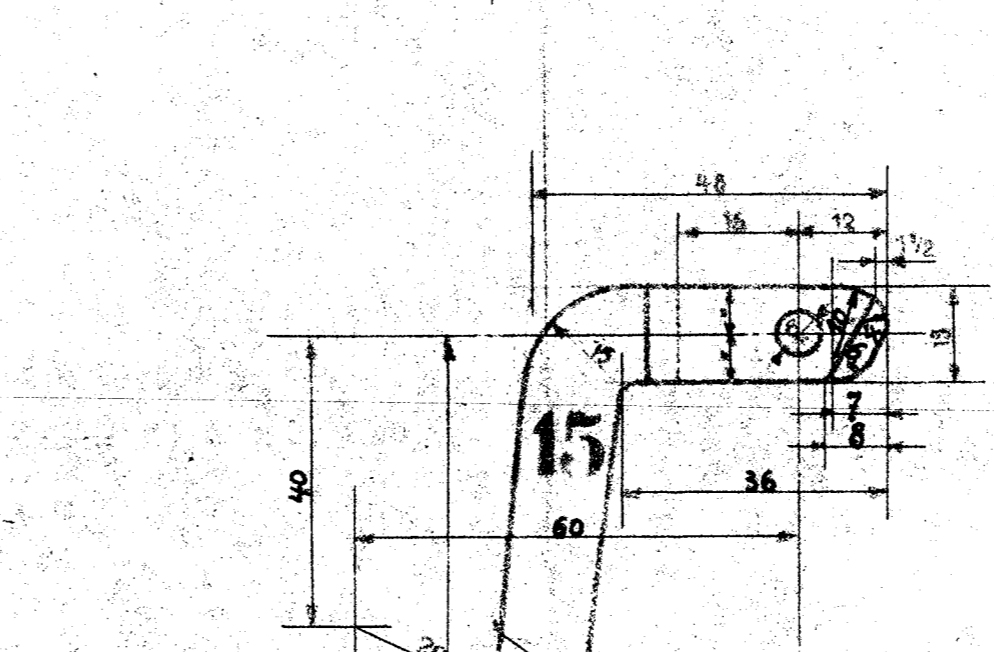
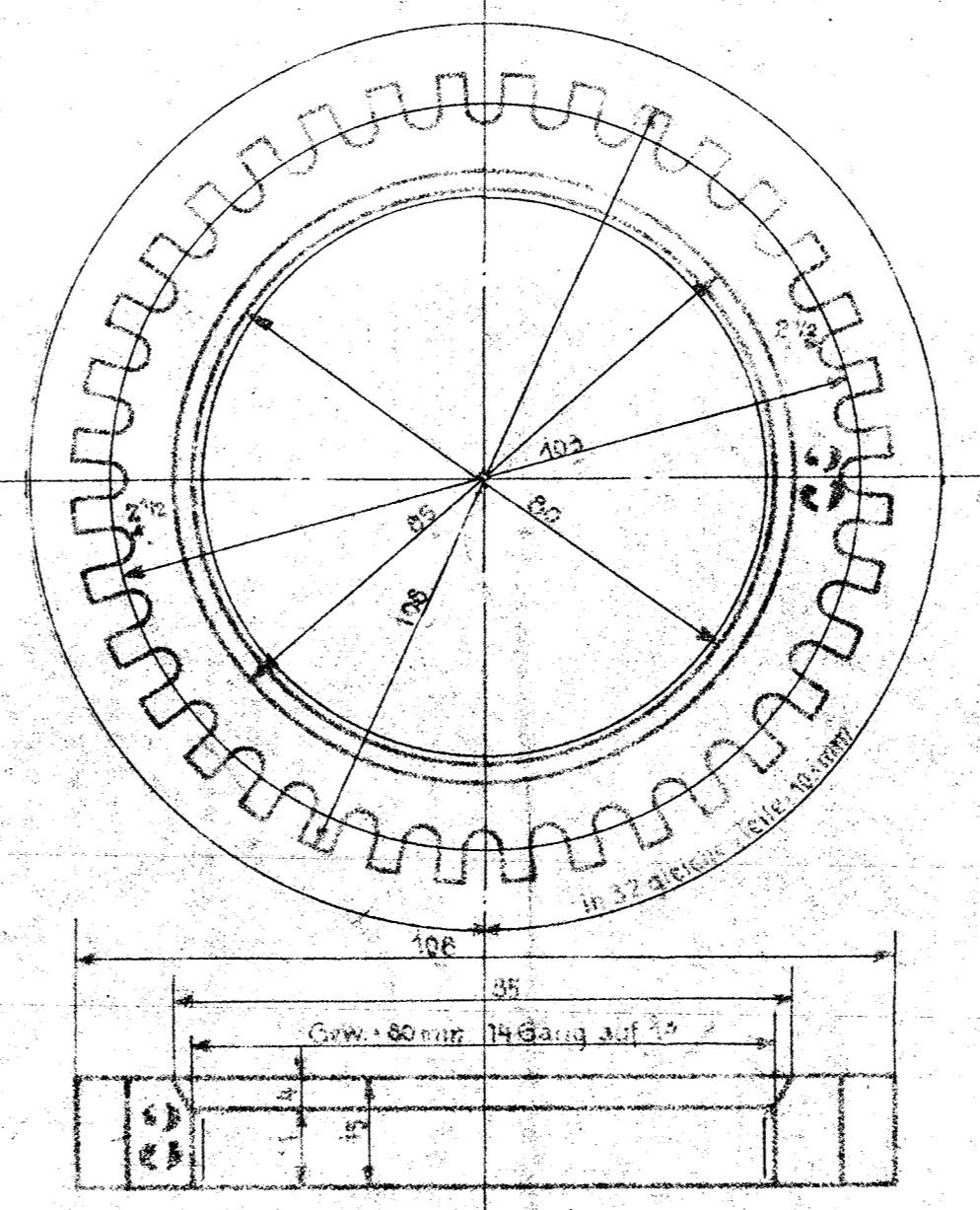
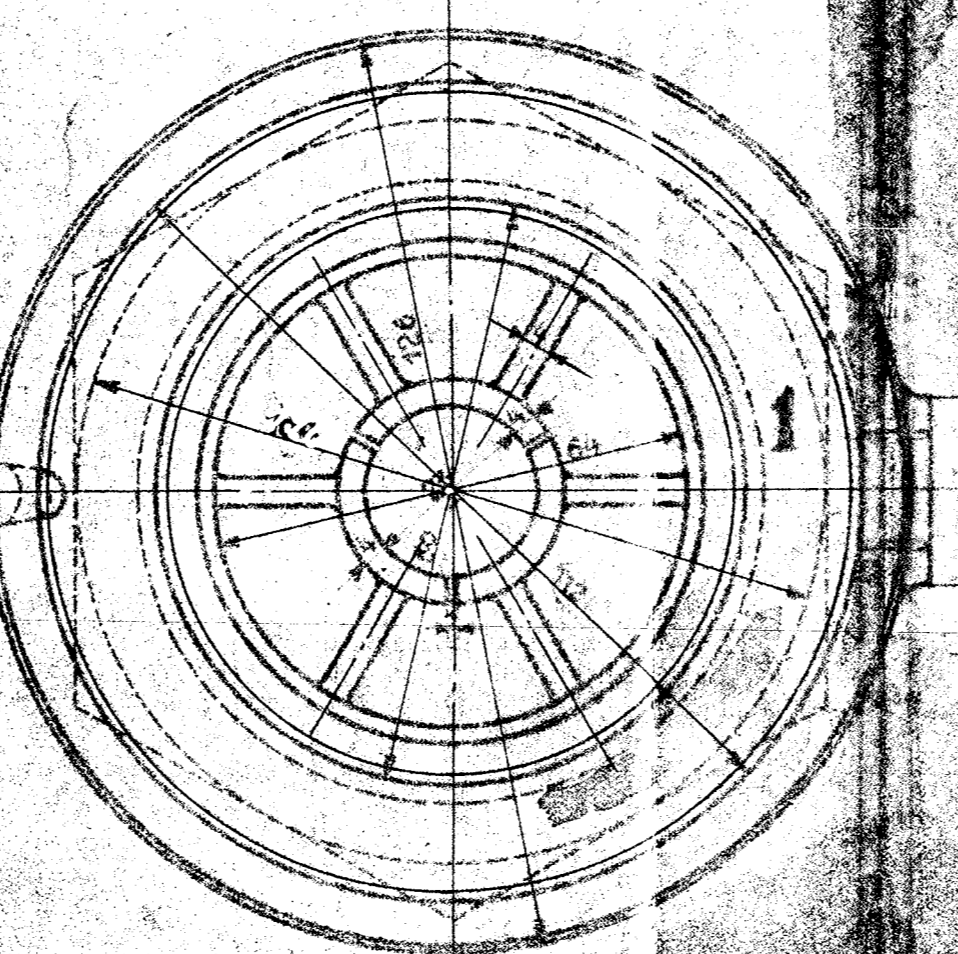
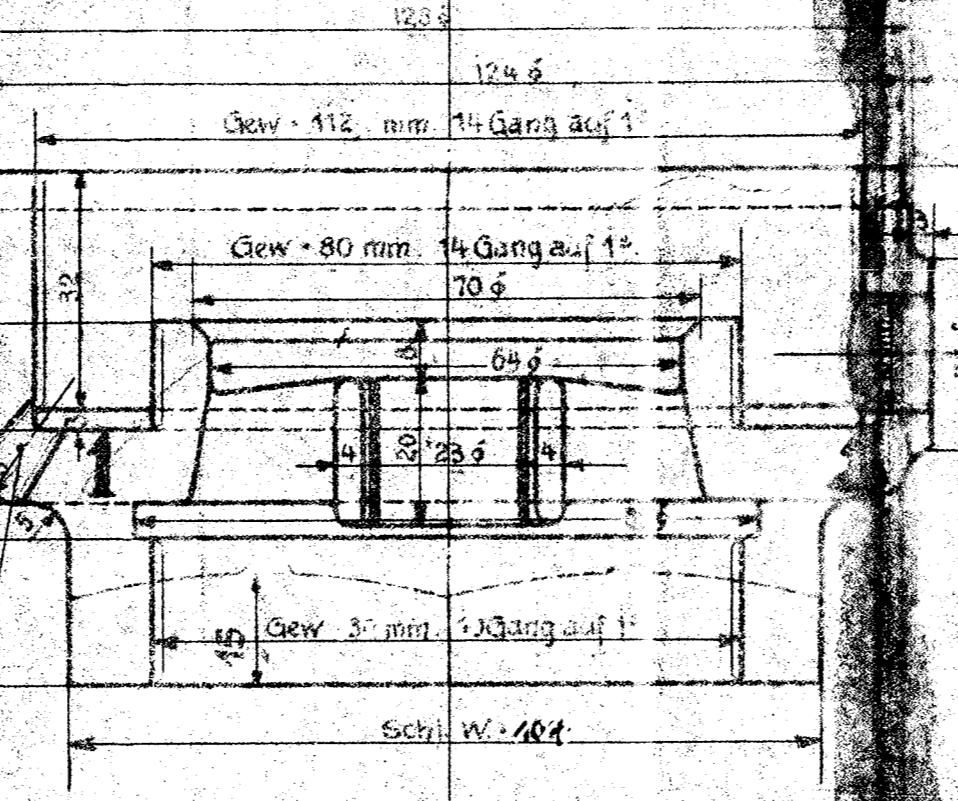
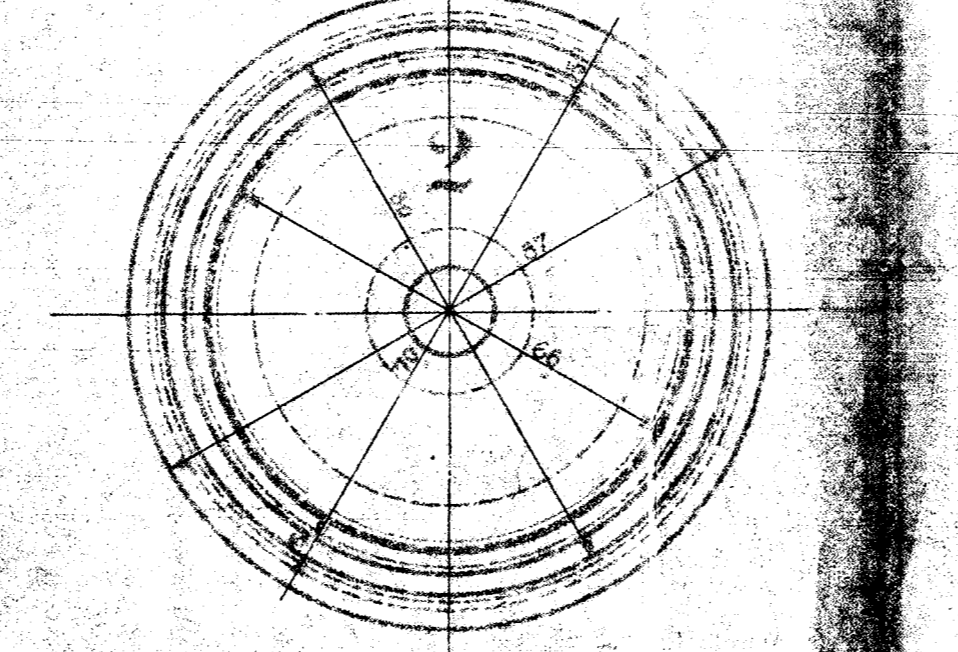
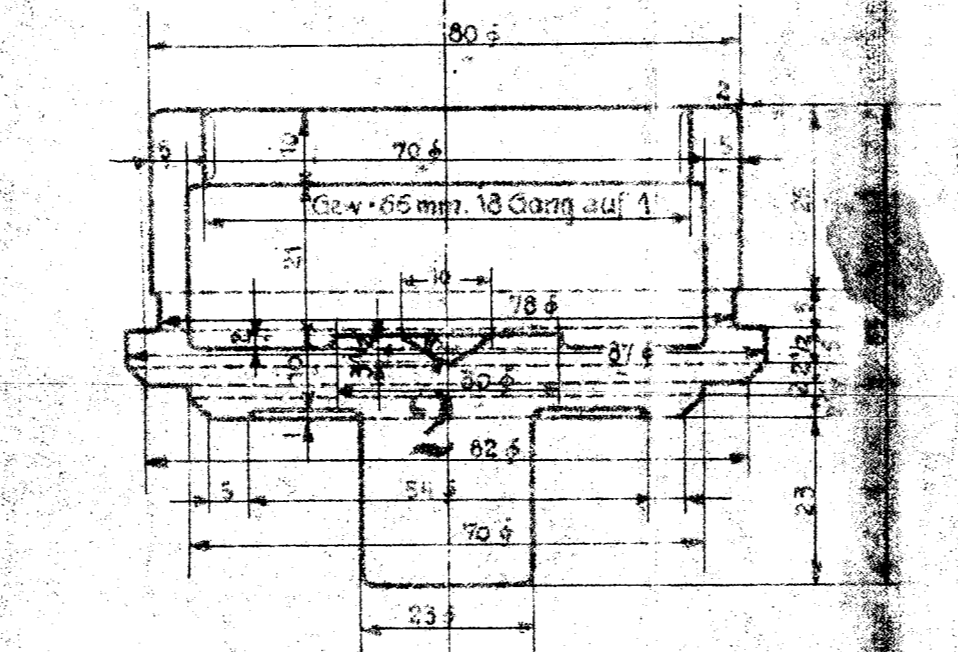
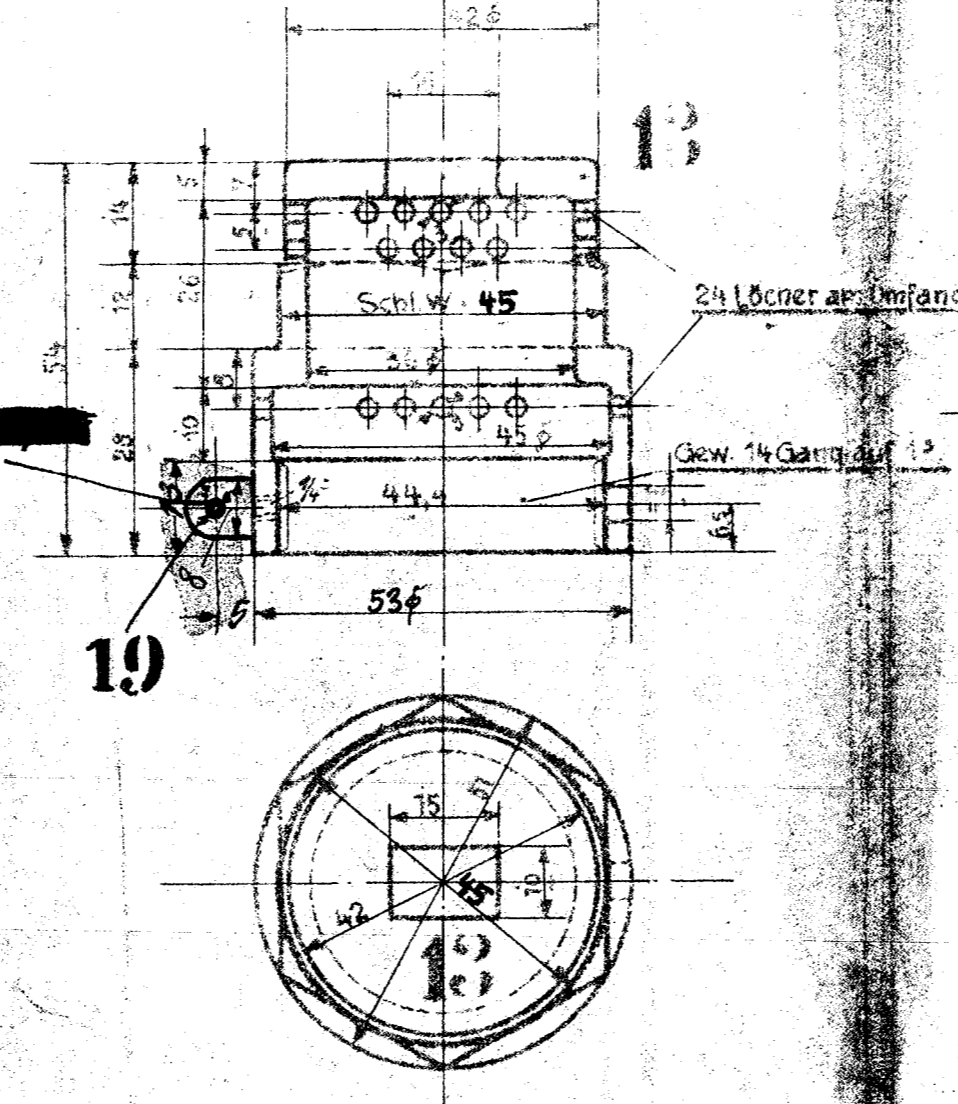
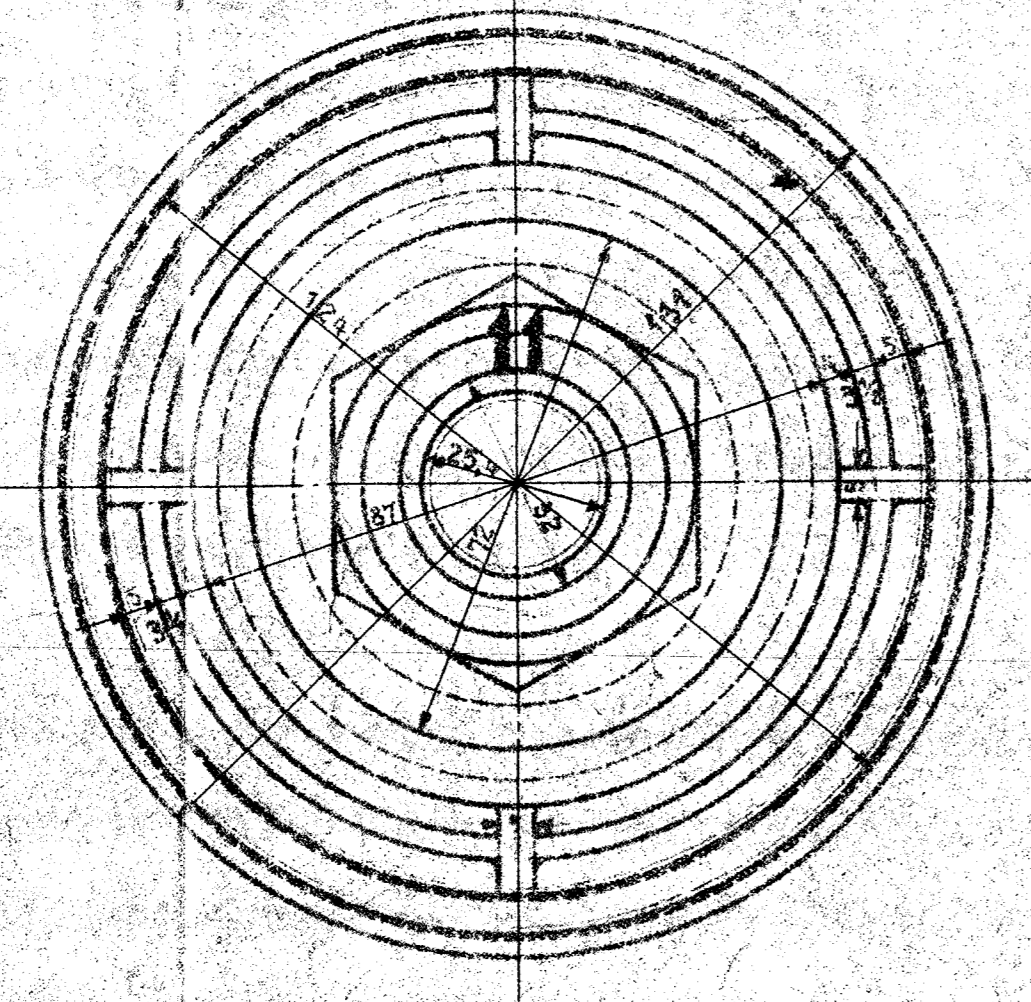
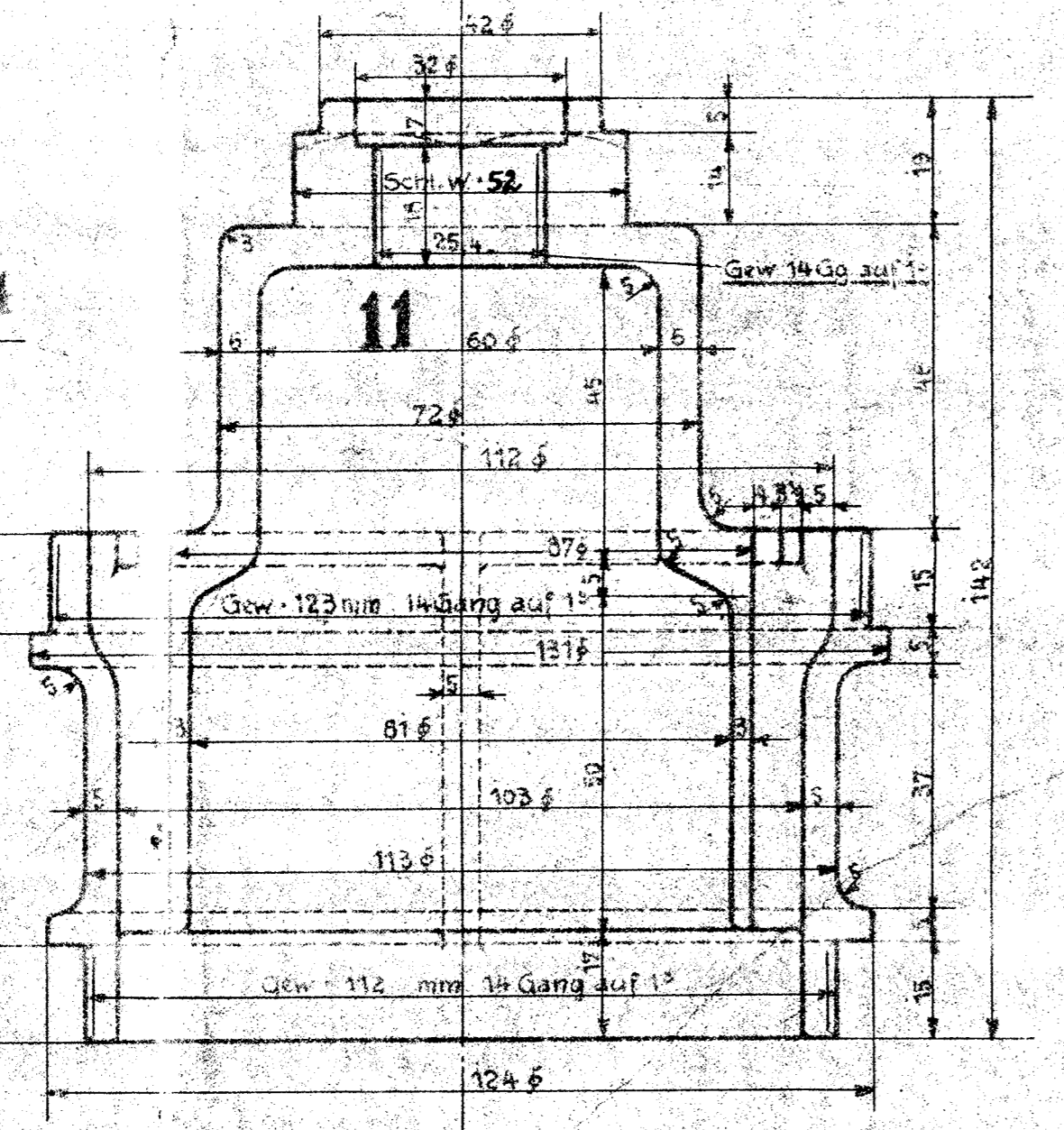
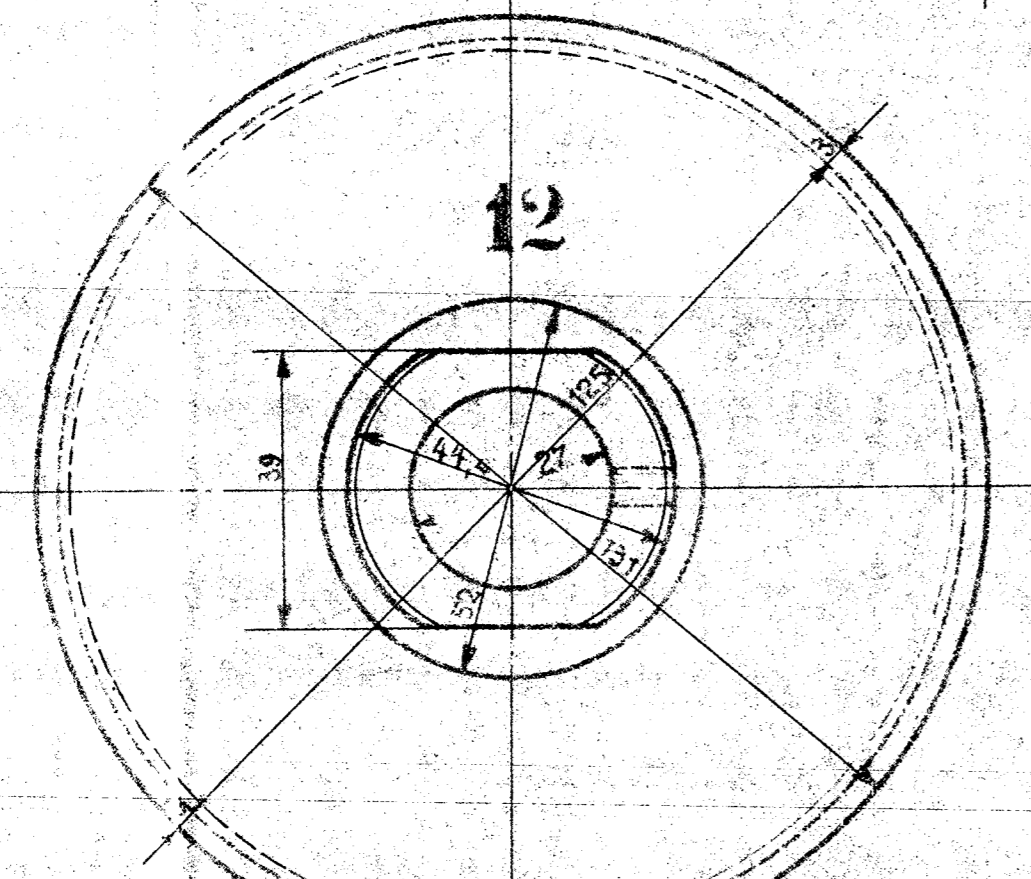
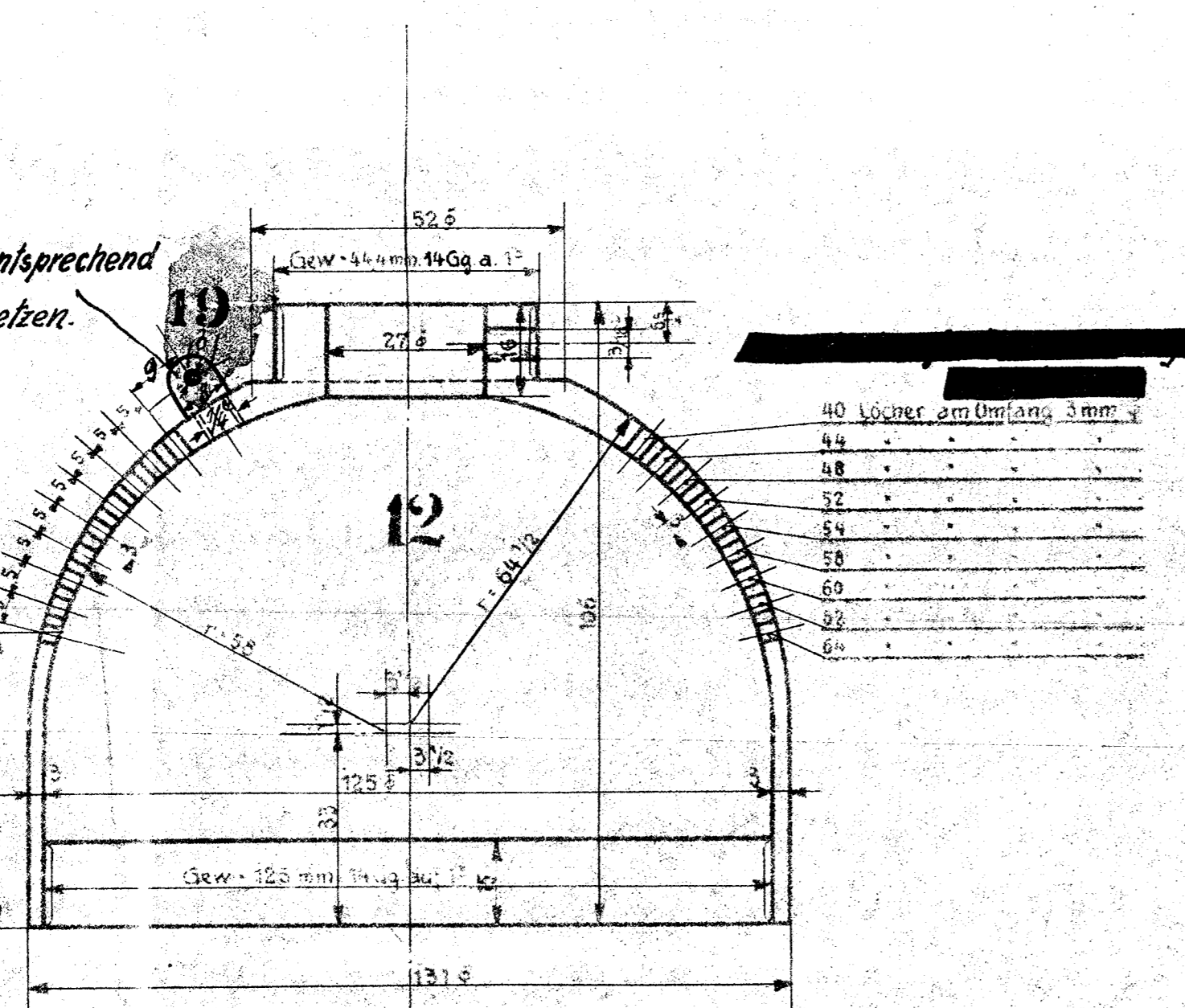
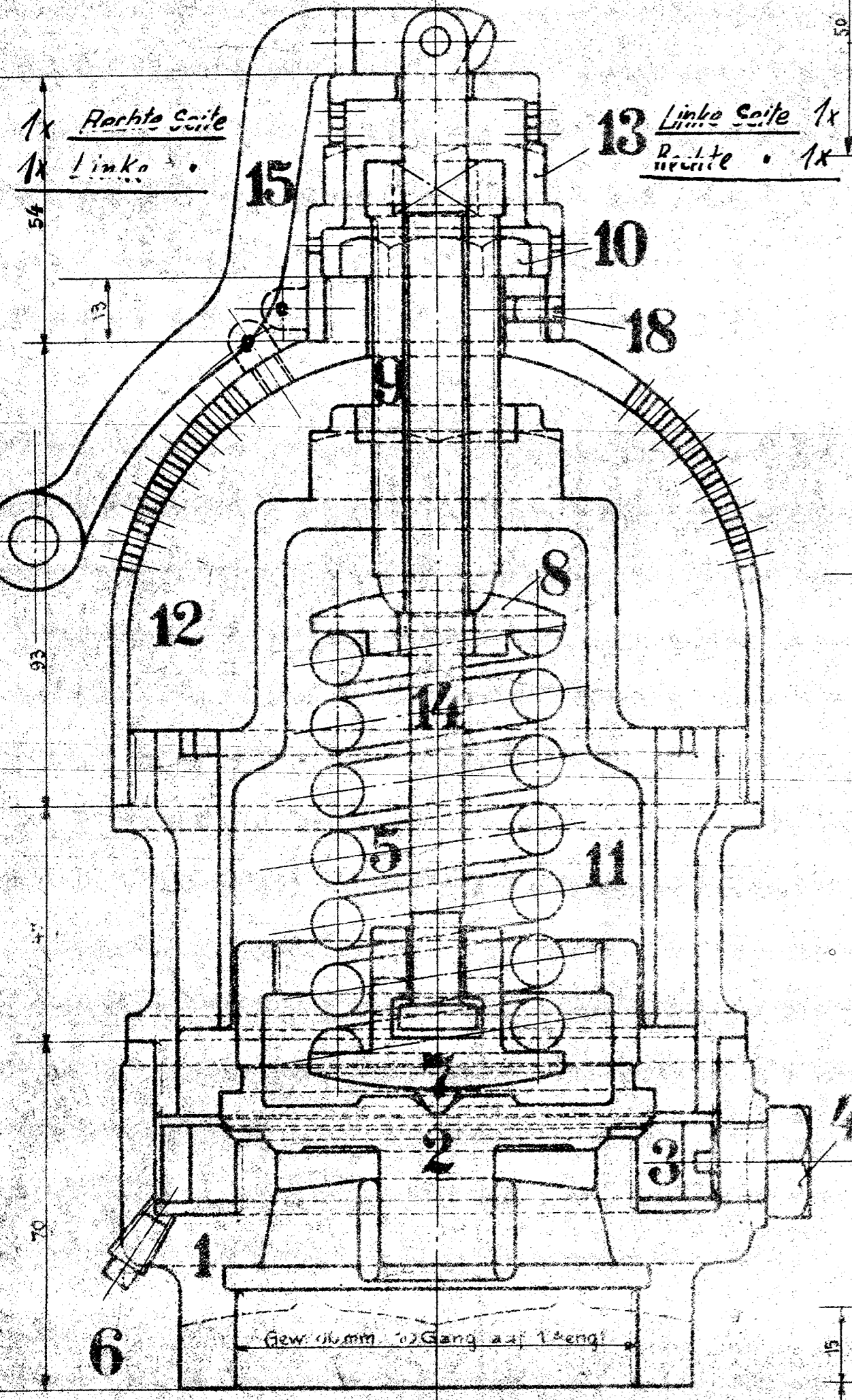


20125

Dieser Nocken ist bei Montage entsprechend dem Nocken an Pos. 13 zu setzen. 8 mm breit.

2 1/2 Zoll

1x Rechte Seite
1x Linke Seite



Alle sichtbaren Flächen werden blank poliert.

Das Ventil ist so zu regulieren, daß es bei Überschreitung eines Druckes von 12 Atm. sofort abbläht, es muß sich dann nach dem Sinken des Druckes auf 11,8 Atm. wieder sofort schließen.

Legierung für Rotguss:
88% Kupfer
10% Zinn
2% Phosphor-Kupfer

Schrauben, Muttern
Schlüsselweiten nach
dänischer Tabelle.

Ausführung für eine Lokomotive.				Materialbestellung für eine Lokomotive	Form- und Abmessungen	Form- und Abmessungen
Stückzahl	Benennung	Nummer	Material	Werkstoff	Abmessungen	Abmessungen
2	Ventilsitz	1	R.G.	F.P.I.	Ø 6250	
2	Ventilsitz	2	R.G.	F.P.I.	62516	
2	Regulierspringe	3			62528	Hänge
2	Feuersteinscheiben	4		P.F.		
2	Federn	5	Stahl	W.		
2	Einweisschrauben	6	P.F.	W.		
2	untere Scheiben	7		P.F.		
2	obere Scheiben	8		P.F.		
2	Stellschrauben	9	R.G.	P.F.	Hänge	
2	Gegenschrauben	10		P.F.		
2	Schäube	11			Ø 62532	
2	Glocken	12		F.P.I.	62544	
2	Kappen	13			62558	
2	Ventilscheiben	14	P.F.	F.		
2	Hebel	15	R.G.	F.P.I.	Ø 62568	
2	Botzen mit Splinten	16	P.F.	F.		
2	Stifte	17		P.F.		
2	Schrauben	18				
4	Nocken	19	R.G.		Vorr. 118a	P.I. F. W.M.

Gültig für folgende Lokomotiven:

Sicherheitsventil

(Coale) 2 1/2 Zoll.

Henschel & Sohn GmbH, Abteilung L. B. 3, Cassel

1-B-1 1/2 Zoll

Urspr. Fabr. Nr. 20125/1